

"Rosette Heart Wreath - DIY"

Designed by: Amber Packer (www.amberpacker.com)



Luscious felt rosette heart wreath you make yourself from start to finish.

Materials:

- 3 1/3 yards red 72" felt (or any color)
- 2" x 2' x 4' foam insulation (or Premade Wreath Form)

Also used:

- Fabric scissors, flat heat pins, serrated kitchen knife or foam cutting tool, hot glue gun and glue sticks.

Instructions:

- Decide on the size of your heart. My door is 36" wide, I decided on a foam heart with the outer dimensions of 20" w X 25 1/2" h. When complete, the heart will be about 26" w X 30" h.

HINT: I like wreaths that are substantial, but still leave between 4 – 6" of the door showing on the sides.

Heart Form:

- Because I wanted the heart form in a size that could not be purchased from a craft store, I needed to make my own wreath base. I purchased 2" x 2' x 4' insulation foam from my local hardware store. I then drew a heart, scanned it and printed it large (using multiple pieces of paper). I hung the pattern on my door to make sure I liked the sizing.
- Trace the pattern on insulation foam and cut using a serrated knife (or foam cutting tool, I used a serrated knife). This process is messy. Keep the vacuum close by and vacuum often.

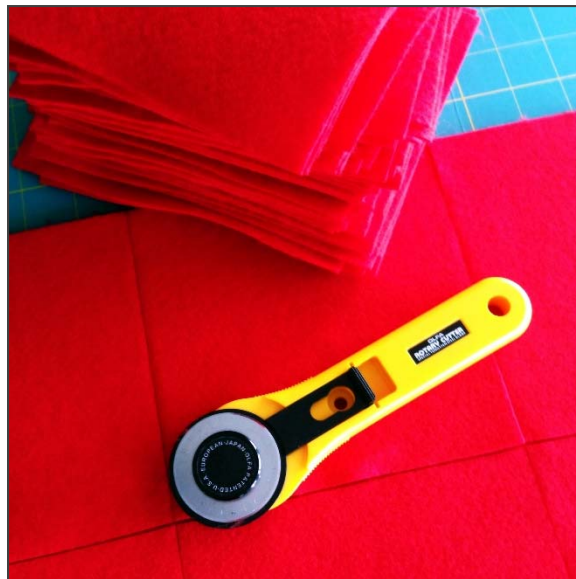


- Using serrated knife, shape the top of the heart.



Felt Flowers:

- Cut: 3 yards of felt into 6x6 squares.



- Cut: 3-4, 1 1/2" x 72" felt strips.
- Wrap heart form with felt strips. Secure using flat head pins.



- Hand cut spiral flower forms.



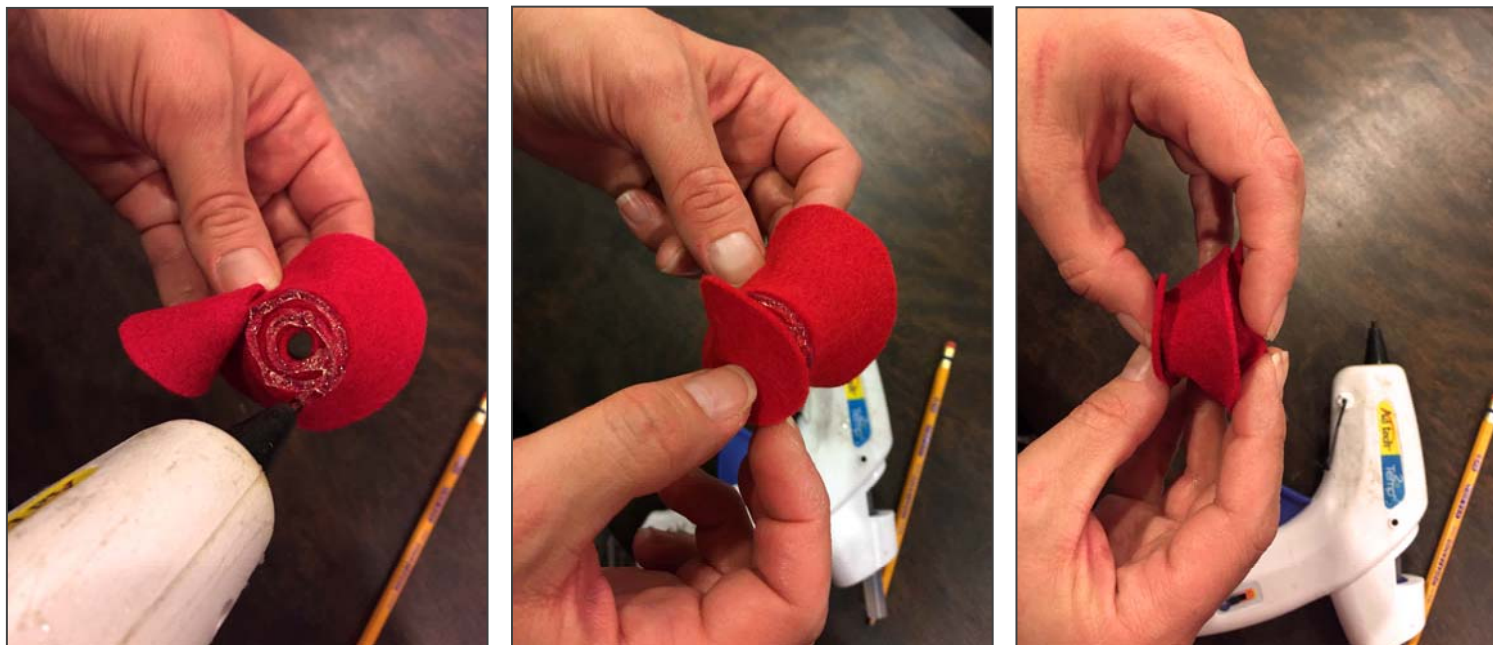
HINT: If you would rather not cut out the spiral flowers, check out the Stampin' Up Spiral Flower Die and Big Shot die cutter



- Roll spiral flower rosette, starting at the outside edge. Roll a little loose. (The tighter you roll, the smaller the flower).



- Add hot glue (low setting) to flower center. Press center with glue to coiled felt to create flower shape.



- Glue finished flowers to wreath form.



- Add a ribbon to back to hang with.

ENJOY!

Amber